



SWOG Latin America Initiative NEWSLETTER

Strengthening Relationships for Latino Patients with Cancer

VOLUME FOUR | ISSUE ONE | WINTER 2025

SWOG CANCER RESEARCH NETWORK

THE HOPE FOUNDATION FOR CANCER RESEARCH

LETTER FROM THE SLAI COORDINATING TEAM

Dear Readers,

As we celebrate the measurable progress of the SWOG Latin America Initiative (SLAI) in the past year, we are filled with gratitude for your continued support and enthusiasm. This newsletter brings you highlights of our current projects, future plans, and a summary of the dynamic discussions from the Latin American fall symposium in Chicago.

This year's symposium marked an exciting expansion into a new area of focus—lymphoma research—guided by the vision of Dr. Luis Malpica, who provided a compelling overview of the unique epidemiology of lymphomas in Latin America, while Dr. Luis Rubalcava shared insights specific to Mexico. We were also honored to hear from Drs. Sonali Smith and Alex Herrera, who presented opportunities for participation within the lymphoma committee. Together, we are exploring research initiatives on lymphoma variants that, while rare in the United States, are more prevalent in Latin America, underscoring our dedication to addressing health challenges through meaningful cooperation.



The SLAI Coordinating Team: Dacia Christin, MPH; John Crowley, PhD; Mariana Chavez Mac Gregor, MD

Continuing our tradition of spotlighting SLAI member sites, this newsletter celebrates our colleagues in Chile. Dr. Javier Retamales delivered an outstanding presentation on Chile's impactful contributions to research in the NCTN and NCORP networks, from high patient

accruals to academic exchanges, and shared an inspiring vision for the future. You can find additional details about the symposium in this newsletter, or you can access the recorded presentations on the SWOG website. This event exemplified the power of

CONTINUED ON PAGE 2

LETTER FROM PAGE 1

collaboration, bringing together investigators from Latin America and the US, with a hybrid format that enabled greater participation.

In addition, we are excited to share updates from our annual clinical trials training conference in Lima, Peru, hosted in partnership with the Instituto Nacional de Enfermedades Neoplásicas. Over three dynamic days, local investigators participated in lectures, biostatistical workshops, and discussions of breast and gastrointestinal cancer proposals relevant to reducing the disease burden or improving the lives of patients with these cancers. The enthusiasm and engagement demonstrated at this event reaffirmed the importance of building capacity for innovative cancer research.

Looking ahead, we remain committed to activating SWOG clinical trials across the region, with 2024 being a record year for patient accruals. This milestone would not be possible without your commitment, guidance from SWOG leadership, advocacy from the Operations Office, and the vital support of The Hope Foundation for Cancer Research.

The SLAI offers a wealth of opportunities for collaboration, mentorship, and the development of bidirectional academic relationships. As we forge ahead, we are inspired by the power of partnership in driving meaningful progress in cancer research. Thank you for being an integral part of this transformative journey.

Sincerely,
The SLAI Team

Looking ahead,
we remain
committed
to activating
SWOG clinical
trials across the
region, with 2024
being a record
year for patient
accruals.



INEN and SWOG presenters in Peru

SLAI UPDATES

2024 was a thrilling year for the SLAI, contributing 227 patient enrollments to network group trials. This more than doubles the previous best accrual year in 2012. All trials require a lot of sweat and toil, but much of this success in this year’s accrual can be attributed to the SWOG member site in Chile, which in late 2024 opened EA1151 “The Tomosynthesis Mammographic Imaging Screening Trial (TMIST)” after years of navigating protocol requirements for trial activation. The Instituto Nacional del Cáncer and Hospital Sótero del Río in Chile enrolled an impressive 105 patients before the trial closed to accrual at the end of December 2024.

The Instituto Nacional de Cancerología, the SWOG member site in Mexico and a consistent top accruer, opened several trials in 2024, while enrollments at the Instituto Nacional de Enfermedades Neoplásicas in Peru and the Hospital de Clínicas Dr. Manuel Quintela in Uruguay also gained momentum. Most of the SLAI sites are on track to fulfilling SWOG membership requirements of enrolling an average of 10 patients per year over three years—a significant feat for sites outside of the US given the limited availability of protocols and the additional barriers sites outside of the US face.

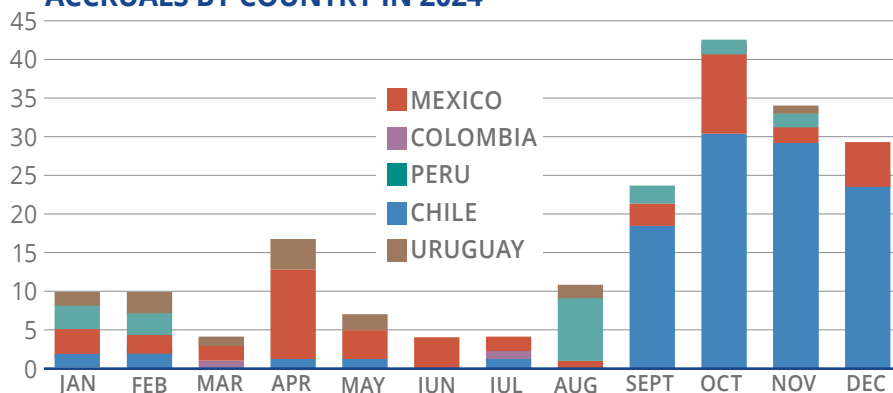
S2010 and S2013 both enrolled steadily before closing for accrual. Although protocols from the lymphoma committee are not yet on the table **at right**, we continue to explore the feasibility of opening SWOG and other network group lymphoma trials and expect at least one trial to make the list in the

Summer 2025 Newsletter (**see article on pg. 9**).

While 2025 enrollment is unlikely to match 2024, several trials in the activation process are expected to enroll well in the region. The SLAI is increasing efforts at enrolling to NCTN trials. This has always posed a challenge because fewer NCTN trials are available to sites outside of the US, and when available, they often have more barriers due to issues like drug distribution and long regulatory delays stemming from concerns like unspecified future use of specimens and registration of drugs in national registries for the protocol-defined use.

SWOG is also expanding outreach for other network group-led protocols where SLAI sites could contribute successfully to accrual. Several trials from other groups show promise, and the SWOG sites in the region have the patient population and a shared dedication to improving cancer care and outcomes for patients.

ACCRUALS BY COUNTRY IN 2024



STUDIES APPROVED FOR SLAI PARTICIPATION IN 2024

KEY ● Pending regulatory approvals ● Protocol in translation ● Pending barrier resolution

Study	Activated	In activation process
S1501		Chile Peru ●
S1703	Mexico Peru Uruguay	Chile ●
S1802	Colombia Mexico Chile	
S1827	Colombia Mexico Chile	
S2010*	Chile Mexico Peru Uruguay	
S2013*	Chile Mexico Uruguay	
S2104		Chile Colombia Mexico Uruguay ●
S2212		Mexico ●
S2312		Mexico ●
A022101		Chile Colombia Mexico ●
EA1151*	Chile	
EA2197		Chile Mexico ●
EA8134		Mexico
BR008		Chile Mexico Peru Uruguay ●
BR009		Chile Colombia Mexico Peru Uruguay ●
HN009		Mexico ●
GY019		Chile Mexico Peru Uruguay ●

*Recently closed to accrual (S2013 was closed to NCTN sites only).



**DID YOU
KNOW
?**

This conference was made possible through funding from The Hope Foundation for Cancer Research, which provides ongoing support to the SLAI.

< Rachael Sexton and Dr. John Crowley discuss study design with INEN residents

SWOG AND INEN IN PERU COLLABORATE FOR THE 2024 CLINICAL TRIALS TRAINING CONFERENCE IN LATIN AMERICA

The Instituto Nacional de Enfermedades Neoplásicas (INEN) hosted the most recent SLAI clinical trials training course from November 13 to 15, 2024, in Lima, Peru. The training, titled “Innovative Research in Cancer: A Clinical and Translational Conference,” brought together speakers from Peru and the United States. This event was a collaborative effort, designed and implemented in partnership with Dr. Tatiana Vidaurre, SWOG principal investigator and executive director of the Department of Medical Oncology at INEN, and Ninoska Macavilca, SWOG lead oncology research professional (see article about Ninoska on pg. 6)

INEN Head Dr Francisco Berrospi, INEN Director of Research Dr. Juan Carlos Haro, INEN Director of Education Dr. Miguel Pinillos, and many more local oncologists and investigators not only ensured a warm welcome for the US visitors but also presented on the local cancer burden, research infrastructure and programs, and more. Key SWOG leaders attended and presented at the

conference, including Group Chair Dr. Charles Blanke and Group Co-Chair Elect Dr. Lucky Lara, both of whom participated in person. Group Co-Chair Elect Dr. Dawn Hershman joined virtually, while SWOG Executive Officer for International Affairs Dr. Mariana Chávez Mac Gregor participated on-site.

Other critical topics that were addressed included:

- Research infrastructure in both countries
- Cancer prevention and control
- Patient advocacy
- Clinical research in breast and gastrointestinal cancers.

Interactive afternoon workshops provided hands-on training on the following essential topics:

- Biostatistics fundamentals
- Sample size calculations
- Developing clinical protocols
- Biomarkers in clinical trials
- Pragmatic trials
- Grant writing.

SWOG’s in-person participants included members of the SLAI team: Dacia Christin, Rachael Sexton, and Dr. John Crowley. Additional contributors included:

- Dr. Barbara Segarra (SWOG patient advocate committee)
- Dr. Lynn Henry (SWOG symptom management and survivorship

CONTINUED ON PAGE 7

DR. JAVIER RETAMALES, A FORCE IN CHILE

Starting my career in Chile, I never imagined I would have the opportunity to participate in national and international clinical trials. My involvement with SWOG has played a key role in discovering this facet of my professional life. In SWOG, my role is multifaceted: it frequently involves reviewing protocols for feasibility, guiding trial-related regulatory processes, setting up research sites, and overseeing protocol implementation across multiple centers. I find it extremely rewarding, given the continuous challenges and the excitement that comes from driving innovative research forward.

SWOG, along with support from GOCCHI, a collaborative cancer trial group and SWOG main member site in Chile, has opened new horizons in my career. Six years ago, I completed my training as a radiation oncologist, but my experiences in leading SWOG and other research group trials have shown me that my deeper passion lies in developing oncology studies that drive broad-scale improvements rather than focusing solely on individual patient care. This shift has led me to refocus my career goals toward a global oncology mindset, where I can contribute to larger systemic changes benefiting a greater number of patients.

Additionally, my participation as a member of the SWOG Quality of Life (QoL) Committee—led by Dr. Michael Fisch and Dr. Lynn Henry—was a major catalyst for my interest in patient-centered outcomes. Their guidance, combined with Dr. Unger’s support in trial design and statistics, were pivotal in shaping my approach to research and quality of life measures in oncology.

Currently, I am working on a pilot project funded by a SEED award through The Hope Foundation. This project centers on a self-designed electronic Patient-Reported Outcomes (ePRO) platform, which collects end-of-life symptoms from patients with advanced cancer via text messages. Its implementation has exceeded expectations, with high adherence rates. We are close to completing

enrollment, and I plan to present preliminary results at the upcoming ASCO meeting.

In parallel, I have been developing a small language model (SLM) to analyze free-text clinical records and identify symptoms. This idea addresses the challenge of non-

scheduled visits in advanced cancer patients and was selected by the ASCO International Clinical Research Scholar Program. The rapid progress owes much to Dr. Virginia Sun from the SWOG Palliative Care Committee, who has served as my mentor. Moving forward, I intend to validate the free-text approach within the existing ePRO platform, using established questionnaires to confirm symptoms.

These projects have broadened my perspective on oncology research and fueled my dedication to employing novel digital tools that optimize patient care and symptom management.

“... my experiences in leading SWOG and other research group trials have shown me that my deeper passion lies in developing oncology studies that drive broad-scale improvements”

DR. JAVIER RETAMALES



In picture: Dr. Javier Retamales, Zdenka Zlatar, and Maria Jose Silva, preparing an S2013 specimen shipment to the SWOG biobank in 2024.

MEET NINOSKA MACAVILCA, THE SWOG GO-TO EXPERT AT INEN

Ninoska Macavilca is the lead oncology research professional at the SWOG site at the Instituto Nacional de Enfermedades Neoplásicas (INEN) in Lima, Peru. Originally trained in midwifery, she discovered her passion for research after taking advanced courses in primary prevention for gynecological cancers. Her journey into research began as a coordinator in INEN's gynecological surgery unit, where she was soon managing the site's first SWOG protocol, S1316 "Prospective Comparative Effectiveness Trial for Malignant Bowel Obstruction."

Only certain network group protocols can be opened outside of the US. After reviewing a protocol that non-US sites may be able to participate in, Dr. Tatiana Vidaurre, the SWOG PI at INEN, and Ninoska identify investigators who could lead the study locally. Ninoska helps her team through the feasibility evaluation for the protocol and serves as their "right hand" through the entire course of the trial. So far, she has served as research coordinator for S1316, S1703, and S2010, and she is working with local INEN investigators on opening S1501, GY019, BR008, and BR009. Over time, she has become the local go-to expert for all things SWOG. She guides new staff through the registration for NCI and SWOG rosters, oversees submissions to scientific review and ethics committees, and facilitates patient enrollment and follow-ups for SWOG studies. She was also our very talented behind-the-scenes coordinator—or perhaps puppet master would be more appropriate?—of the SLAI-INEN clinical trials training conference at INEN in November (**see article on pg. 4**).

For Ninoska, the most rewarding part of her role is helping patients feel heard and supported. She takes pride in offering immediate assistance to patients navigating the site and managing cancer or treatment symptoms, whether physical or psychological. She recalls her

experience with the S2010 protocol, where she was able to help patients address side effects and get answers to their concerns well before their next follow-up visits, often months away. Knowing she can make a meaningful impact on patient care is a source of immense fulfillment for her.

Working in research has opened many doors for Ninoska, who takes pride in having attended two SWOG meetings and having mastered data submission across NCI and SWOG platforms. She values every interaction at these meetings as a learning opportunity, gaining insights into patient recruitment, documentation, and ongoing studies, which enhances her contributions to international cancer research and interventions that improve patients' lives.

Ninoska is committed to professional growth and emphasizes the importance of continuing education for supporting investigators and improving patient care. However, she highlights the challenge of finding affordable training options for Latin American coordinators. She dreams of a future where all SLAI coordinators can attend in-person training sessions together, fostering collaboration and community.

Outside of her professional responsibilities, Ninoska enjoys long runs, biking, and reading literature, particularly historical fiction. Among



Knowing she can
make a meaningful
impact on patient
care is a source
of immense
fulfillment . . .

her favorite books are *The House of the Spirits* by Isabel Allende, *The Name of the Rose* by Umberto Eco, and *The Pillars of the Earth* by Ken Follett.

For any oncology research professionals who wish to reach out and share experiences, seek advice, or forward continuing education opportunities with Ninoska, she can be contacted at asistente_investigacion@inen.sld.pe.

INTERNS SUPPORTING THE SLAI MISSION!

In 2024, **Dacia Christin, SWOG Latin America Initiative project manager**, initiated discussions with Baylor University in Waco to establish a SLAI internship. With invaluable support from Dr. Lisa Go, Dr. Rizalia Klausmeyer, and Baylor's Global Health Student Network, this effort brought on two talented interns in the fall of 2024.

Nia Spilotro, a senior on the pre-med track, collaborated with Dacia on developing resources to enhance SWOG's clinical trial toolkit for working with patients with limited English proficiency. Nia researched and developed a handout containing considerations for working with family members of patients with limited English proficiency, a table topic proposal for the ORP Open Forum during the upcoming spring group meeting. Additionally, Nia contributed to drafting articles about SWOG in Chile and lymphoma included in this newsletter. She will continue her internship with the SLAI next semester while balancing her senior coursework and awaiting responses from medical schools.



Ignacio Rodríguez Abarca, a senior research fellow at Baylor, spearheaded the creation of an online Discord server designed to support Spanish-speaking research coordinators involved in SWOG studies across the United States and Latin America. This secure, member-only platform enables research coordinators to exchange resources and information in Spanish, fostering a collaborative and supportive community. Ignacio is also preparing for graduate studies in human genetics, with plans to begin in fall 2025.



We are grateful for the dedication these interns have brought to the SLAI and look forward to seeing their continued contributions to medical sciences.

The SLAI aims to continue welcoming one to two interns each semester, fostering ongoing collaboration and opportunities for student engagement in clinical trials and topics relevant to participants with limited English proficiency.

INEN FROM PAGE 4

committee)

- SWOG GI committee leaders Drs. Philip Philip and Gabriela Chiorean
- Dr. Luis Malpica (remote, SWOG lymphoma committee)
- Dr. Jimmy Rae (remote, SWOG biobank)
- Dr. Don Dizon (remote, SWOG vice chair for membership and accrual)
- Dr. Cecilia Monge (remote, National Cancer Institute).

We were also privileged to have the participation of Drs. Julie Gralow and Elizabeth Garrett-Mayer from the American Society of Clinical Oncology (ASCO), whose contributions were invaluable.

The conference concluded with a research proposal presentation session, featuring early-stage Peruvian investigators whose proposals focused on clinical trials in GI or

breast cancers. These proposals received detailed, in-person feedback from seasoned clinical researchers, including:

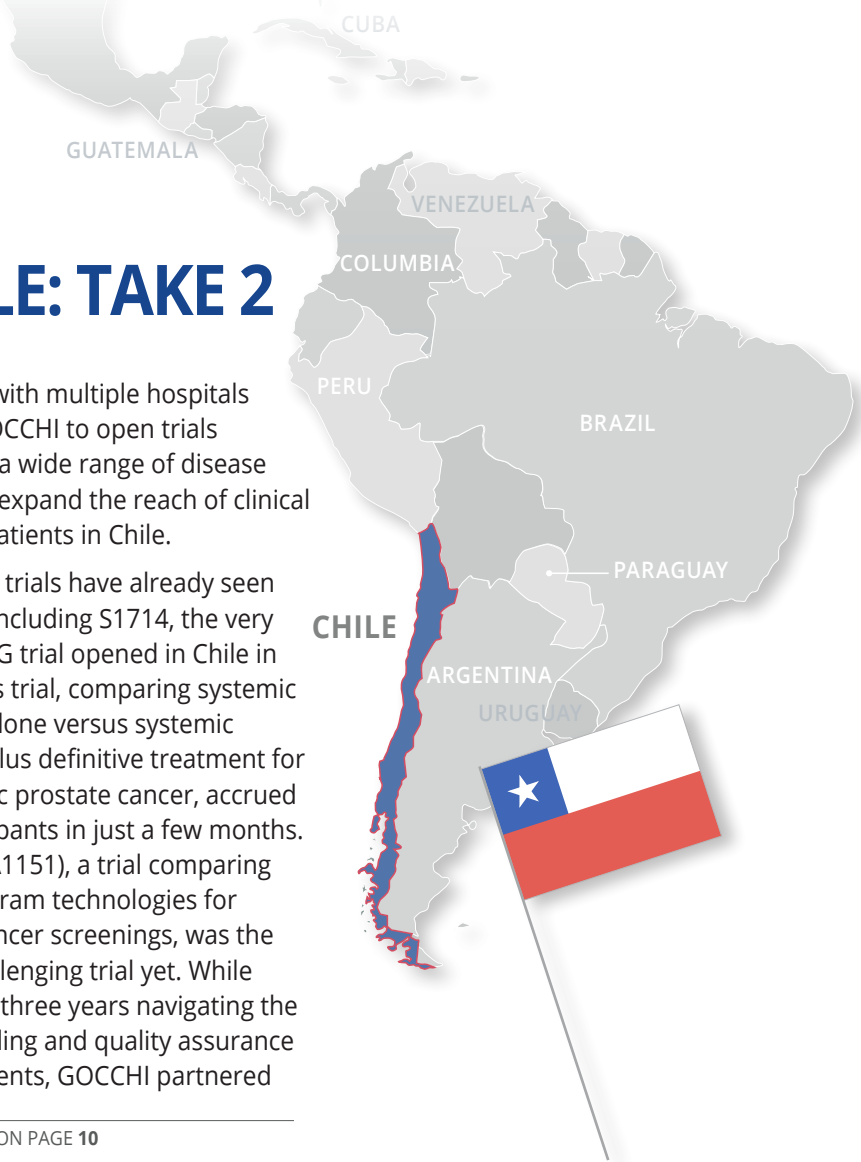
- Drs. Mónica Calderón, Silvia Neciosup and Tatiana Vidaurre (INEN)
- Dr. Julie Gralow (ASCO)
- SWOG leaders Drs. Mariana Chávez Mac Gregor, Lynn Henry, Philip Philip, and Gabriela Chiorean
- SWOG statisticians Rachael Sexton, Dr. Michael LeBlanc, and Dr. John Crowley, alongside Dr. Elizabeth Garrett-Mayer (ASCO).

Although the selection process was challenging for our reviewers, an award was given to the best proposal in each area. Drs. Jessica Meza and Victor Paitán received the GI award for their chemotherapy de-escalation trial targeting patients with gastroesophageal junction and gastric adenocarcinoma. In the breast

cancer category, Drs. Ángela Leonardo and Katia Roque were recognized for an ambitious multistep study aimed at improving onco-navigation for advanced breast cancer patients starting at INEN before expanding throughout Peru.

This conference was made possible through funding from The Hope Foundation for Cancer Research, which provides ongoing support to the SLAI and INEN. Continuing Medical Education (CME) credit was offered through the Medical College of Peru by the Peruvian Cancerology Society.

SWOG extends its thanks to the many collaborators at INEN whose dedication and efforts made this conference a success. We left Lima with valuable insights about clinical research in Peru and many treasured memories, documented forever in the many photo opportunities shared over Peruvian food and throughout the conference.



SPOTLIGHT ON CHILE: TAKE 2

The [first SLAI Newsletter](#) featured an article on SWOG's presence in Chile, and in this issue, we are excited to further highlight the efforts of Grupo Oncológico Cooperativo Chileno de Investigación (GOCCHI), SWOG's main member in the country. GOCCHI has expanded network group activities and leveraged its SWOG membership to strengthen oncological services!

GOCCHI is a non-profit network that facilitates cancer clinical trials in Chile and serves as SWOG main member and administrative center for three components (sub-affiliates) currently enrolling to network group trials: the Instituto Nacional del Cáncer, Hospital Sótero del Río, and Hospital del Salvador.

Dr. Retamales notes that Chile's "framework of the oncology clinical practice is really fragmented. ... We don't have a fancy cancer hospital." For example, some hospitals might not treat patients with breast or gastrointestinal cancers, but they have strong clinical teams with research capacity in other areas. Depending on the disease site, GOCCHI generally tries to activate network group trials at two or more of the hospitals, a crucial aspect for participation of smaller hospitals with otherwise limited capabilities.

Working with multiple hospitals allows GOCCHI to open trials targeting a wide range of disease sites and expand the reach of clinical trials to patients in Chile.

Various trials have already seen success, including S1714, the very first SWOG trial opened in Chile in 2021. This trial, comparing systemic therapy alone versus systemic therapy plus definitive treatment for metastatic prostate cancer, accrued 10 participants in just a few months. TMIST (EA1151), a trial comparing mammogram technologies for breast cancer screenings, was the most challenging trial yet. While spending three years navigating the credentialing and quality assurance requirements, GOCCHI partnered

CONTINUED ON PAGE 10

Key SWOG investigators in Chile:

- Dr. Bettina Müller**
- Dr. Javier Retamales**
- Dr. Roberto Estay**
- Dr. Natalia Jara**
- Dr. Ignacio Salazar**
- Dr. Ingeborg Araya**
- Dr. Mary Ann Stevens**
- Dr. Miguel Angel Urzúa**
- Dr. Alejandro Brañes**
- Dr. Ana Maria Barría**
- Dr. Camila Cifuentes**
- Dr. Ann Walton**

Key administrative and research staff:

- Dario Cuevas**
(director of operations)
- Zdenka Zlatar**
(lead oncology research professional, or ORP)
- Genesis Latorre** (ORP)
- Yascara Cerda**
(secretary)

THE SLAI HIGHLIGHTS SYNERGIES FOR NETWORK GROUP COLLABORATIONS

At the SWOG group meeting in fall 2024, the Latin American symposium showcased groundbreaking lymphoma research conducted in NCTN network groups and in collaborative research groups in Latin America. Among the key presentations, we were thrilled to welcome Drs. Sonali Smith and Alex Herrera, leaders from the SWOG lymphoma committee; Dr. Luis Malpica from MD Anderson who will be spearheading the Latin American hematologist investigator collaborations in SWOG; Dr. Luis Rubalcava, a hematologist from the Instituto Nacional de Cancerología, the SWOG member site in Mexico and the largest public cancer hospital in Mexico; and Dr. Marc Hoffmann, the SWOG investigator on the NCTN task force that designed EA4232, an ECOG-ACRIN-led study for patients with peripheral T-cell lymphoma.

Dr. Malpica discussed ongoing research into lymphotropic viruses, which, although globally rare, are more prevalent in Latin America. Researchers in the Latin American Study Group of Lymphoproliferative Diseases (known by its Spanish acronym GELL) ([see article in summer 2024 SLAI Newsletter](#)) aim to improve knowledge of geographic variations, treatments, and patient outcomes by studying how epidemiologic and socioeconomic factors contribute to higher prevalence of lymphomas and whether these viruses might play a role in the region's higher prevalence. The urgency of this work is underscored by the increasing incidence of lymphomas like human T-cell leukemia virus type-1 (HTLV-1)-associated adult T-cell leukemia/lymphoma (ATLL) in some regions of the U.S. such as Florida, New York, and Boston, likely attribut-



able to migration patterns from Latin America and the Caribbean basin.

At the Instituto Nacional de Cancerología in Mexico, clinicians see over 7,000 patients with newly diagnosed cancers annually. Sixty-three percent of the hematological cancers diagnosed at this institute are later determined to be lymphomas. Between 2021 and 2024, the most common subtypes diagnosed were diffuse large B-cell lymphoma (DLBCL), follicular lymphoma, and Hodgkin's lymphoma. Lack of availability of and access to critical medications limits treatment options. Given the high patient volume and treatment barriers at many Latin American sites, Dr. Rubalcava emphasized the importance of collaboration and outreach for increasing research and treatment availability for patients with these lymphomas.

Drs. Smith and Herrera discussed SWOG's lymphoma committee

The SLAI and lymphoma committee members mingle!

and the importance of research collaboration in the face of seemingly insurmountable barriers. Under the leadership of Dr. Jonathan Friedberg, SWOG's lymphoma committee has worked closely with ECOG-ACRIN and the Alliance—also members of the NCTN—and ensured patient advocate involvement early in trial design. Active lymphoma trials span multiple subtypes, including DLBCL, follicular lymphoma, mantle cell lymphoma, peripheral T-cell lymphoma, Hodgkin lymphoma, and primary mediastinal B-cell lymphoma. Many of these group trials build on historical data. The S1826 trial, for example, a practice-changing study for frontline non-

CONTINUED ON PAGE 10

with primary care clinics in the public sector to identify eligible asymptomatic participants and with the private sector to access tomosynthesis mammograms, not currently part of standard of care in Chile. By accrual closure at the end of December 2024, SWOG in Chile had enrolled 105 patients in less than four months. As Dr. Retamales put it in the symposium: “if you believe it, you can make it [happen].”

GOCCHI’s ability to facilitate large-scale collaboration stems from its logistics and funding support, alleviating the financial burden on first-time researchers. These efforts enhance the participation of Chilean sites in global cancer research efforts. For the local population, this translates into increased access to clinical trials and beneficial treatments without the prohibitive expenses often associated with such care. By keeping costs low and streamlining the logistics of clinical trials, GOCCHI hopes to help Chilean patients access beneficial cancer treatments without the typical high financial cost associated with treatment. The continued success and growth of these operations rely on securing basic funding to sustain the GOCCHI’s activities.

Even though individual hospitals in Chile may have a limited pool of participants, network cancer trials have the potential to benefit oncological services nationwide. Dr. Retamales provides the example of A022101 (ERASur),

GOCCHI

GRUPO ONCOLÓGICO COOPERATIVO
CHILENO DE INVESTIGACIÓN

a pragmatic trial evaluating ablative therapies for patients with limited metastatic colorectal cancer. This trial marks the first time that hospitals will make treatment decisions for these patients, allowing them to assess their approach to managing this disease and the use of ablative radiation therapy (SABR). While participating hospitals may not yet have a clear strategy for managing these patients, the findings from this study will help guide their approach moving forward.

GOCCHI in Chile showcases a vital example making large-scale cancer research efforts accessible. Through its network of hospitals, collaborative partnerships, and commitment to supporting patients, GOCCHI is bridging the gap between the global cancer research community and the local healthcare landscape.

Hodgkin lymphoma treatment, led by Dr. Herrera, utilizes past SWOG research as its foundation. The spike in non-SWOG registrations for lymphoma trials from 2020-2023 was largely driven by S1826.

Dr. Hoffman presented EA4232 “A Randomized Phase III Study to Evaluate Benefits of Autologous Stem Cell Transplant in Patients with Peripheral T Cell Lymphoma That Achieved a First Complete Remission (CR1) Following Induction Therapy (PTCL-STAT)” to the SLAI researchers. On January 30, 2025, the trial opened to US sites. At the time of this publication, ECOG-ACRIN is reviewing SWOG Latin American sites’ feasibility concerns and considering their request to participate. The SLAI hopes that this trial will open the door to more research collaborations, leading to better treatment options and improved overall survival for patients.

As some of the groundbreaking research conducted in the network groups has shown, collaboration is key to improving outcomes, due to lymphoma’s varied prevalence. Latin America has greater prevalence of some rare lymphomas than US populations, with some regions in the US showing higher incidence than others. Latin American participation in network group trials could lead to faster results for some of the network group lymphoma studies and ultimately, more effective therapies and better patient care, benefiting patients with lymphomas everywhere.

**WANT TO
LEARN
MORE?**

Sign into the SWOG website to view the full SWOG Latin America symposium from Thursday, October 17, at the 2024 SWOG group meeting here:
[Fall 2024 Group Meeting Recordings | SWOG](#)