



**Lung-MAP S1400 Lung Master Protocol
Update Meeting**

**Friday, April 28, 2017
2:30 to 4:00 pm**

**Hyatt Regency San Francisco
Bay Level, Seacliff A-D**

Agenda

Welcome

Karen Kelly, MD

SWOG Lung Committee Chair

Study Updates

Vassiliki (Vali) Papadimitrakopoulou, MD

Study Chair, Medical Oncology

Study Results

Roy Herbst, MD, PhD

Study Co-Chair, Medical Oncology

S1400I Patient Reported Outcomes

Mary Redman, PhD

Lead Biostatistician

Tissue Submissions

Fred Hirsch, MD, PhD

Study Co-Chair, Translational Medicine

Quality Assurance and Monitoring

Elaine Armstrong, MS

SWOG Quality Assurance Manager

Site Coordinators Committee

Lavinia Dobrea RN, MS, OCN

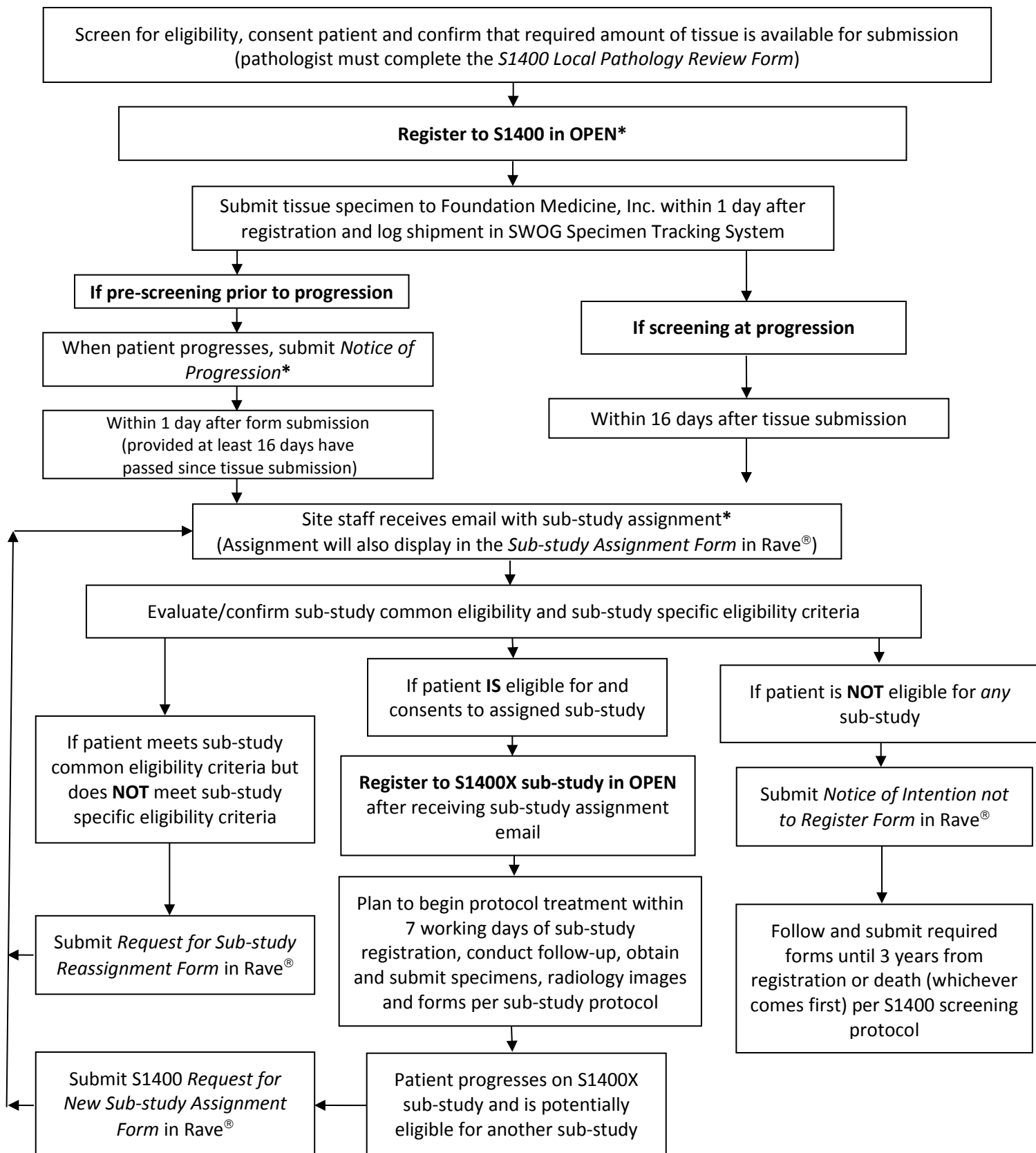
Site Coordinator Committee Co-Chair

Questions and Answers

David Gandara, MD

Study Co-Chair, Moderator

S1400 Registration and Study Flow



*If it is determined that a patient will not register to a sub-study at any time following S1400 registration, the *Notice of Intention Not to Register* form must be submitted. Should the decision to not register a patient to their assigned sub-study be reversed, sub-study registration is allowed despite submission of the *Notice of Intention Not to Register* form.

The Lung-MAP Site Coordinator Committee (SCC) was formed in July 2016. The members are site staff from a variety of institutions, NCTN affiliations, and geographical locations who work closely with the study leadership. The members provide recommendations and feedback on accrual strategies, patient and promotional materials, changes to study procedures, data collection, and staff training materials. Look for their face or name on their badge and let them know your concerns, questions, or helpful advice for making Lung-MAP collaborative and successful. You can also contact them at LungmapSCC@crab.org.



Joan Aresco
joan.aresco@stjoeshealth.org
 734-712-3304

ECOG-ACRIN



Jamie Arnett, BSN, RN, OCN
arnettj@somc.org
 740-356-7594

Alliance



Wanda M. Burdette RN, OCN, CCRP
wburdette@gibbscc.org
 864-560-6810

SWOG



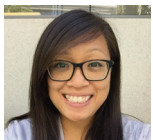
Co-Chair
 Lavinia Dobrea RN, MS, OCN
Lavinia.Dobrea@stjoe.org
 714-734-6214

NRG



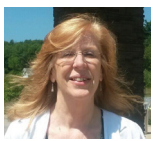
Chair
 Jessica Jordan, BA
jessica.jordan@va.gov
 203-932-5711 ext 3287

Veteran's Affairs Connecticut /
 SWOG



Steffany Lim, CCRP
sllim@ucdavis.edu
 916-734-0561

SWOG



Kathy Malatesta, RN, OCN, CCRC
kathy.malatesta@mainegeneral.org
 207-626-4855

Alliance



Joan Moore, MSN, RN, OCN, CCRP
jmoore@wellspan.org
 717-339-2638

NRG



Stephanie Smith, RN, MSN, OCN
smiths1@sjchs.org
 912-819-5723

ECOG-ACRIN



Tyler Workman, RN, MSN
tworkman@queens.org
 808-691-8583

Minority/SWOG



TBN Canadian Representative



TBN Member



LUNG-MAP

SITE COORDINATORS COMMITTEE



We are seeking applicants for the **S1400 Lung-MAP Site Coordinators Committee**.

Current members represent all types of sites: NCTN, NCORP, CCTG, academic, minority, etc. SWOG has funds to support travel for members to two SCC meetings per year, in conjunction with the SWOG Group Meeting, and funding for up to four conference calls per year. For more information about the committee and to apply:

https://www.surveymonkey.com/r/LM_SCC_2017.

The Committee members recommend and review accrual enhancement strategies and materials, changes to study procedures, and updates to data collection forms. In addition, the SCC provides content for a SCC column in the Lung-MAP staff newsletter and solicits feedback for other content. They advise the Accrual Enhancement Committee on content for the Lung-MAP website. Committee members assist with study promotion and act as Lung-MAP representatives when attending Group meetings or other scientific meetings. Committee members may act as mentors or auditors, supporting the successful implementation of S1400 at the study sites.

1. The Site Coordinators Committee is composed of 12 voting members.
2. The Committee officers consist of a Chair, a Co-Chair and an Alternate Co-Chair, as elected by the voting members of the Committee.
3. Assigned SWOG Data Management staff and S1400 Lung-Map Project Manager serve on the Committee as ex-officio non-voting members.
4. The Chair provides meeting summaries to the S1400 leadership.
5. Members of the Site Coordinators Committee serve for a minimum of a two-year term. Terms are open-ended; members may continue to serve as long as they wish, provided they meet attendance and contribution criteria.
6. If a member resigns or is removed from the Committee, the Committee will solicit applications for membership and select a new member from those who apply. The Committee may also select a new member from a pool of applicants who applied for previous vacancies. The SWOG Statistical Center will maintain records of the application process.



Contact
Lungmapsc@crab.org Contact

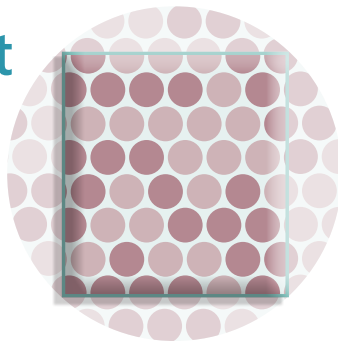


Study requirement

TUMOR CONTENT $\geq 20\%$

including tumor volume $\geq 0.2 \text{ mm}^3$

It is important that the specimen contains as much tumor content as possible to ensure that there's enough DNA needed for sequencing.



S1400 requires adequate tissue for biomarker profiling.

For details, please refer to the **S1400** protocol Section 5 for eligibility requirements and Section 15 for a complete description of tissue requirements. Specimens must be submitted using the SWOG Specimen Tracking System, a process outlined in the **S1400** protocol Section 15.

NOTE FOR LIVER SPECIMENS:

It is recommended that at least 40% of the specimen contain malignant cells to ensure sufficient tumor DNA.

For Best Results, Use These Specifications

SPECIMEN TYPE

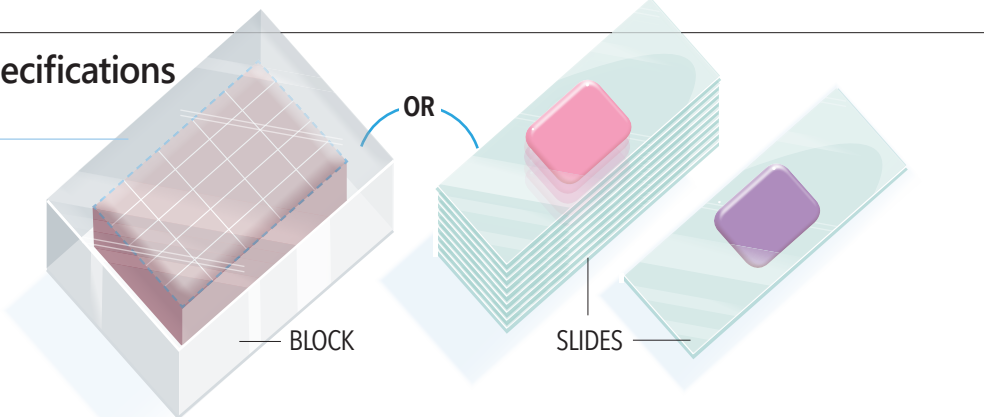
FFPE BLOCK or 12-20 SLIDES (+H&E SLIDE)

Tissue must be formalin-fixed and paraffin embedded. A tissue block is preferred.

• If sending slides:

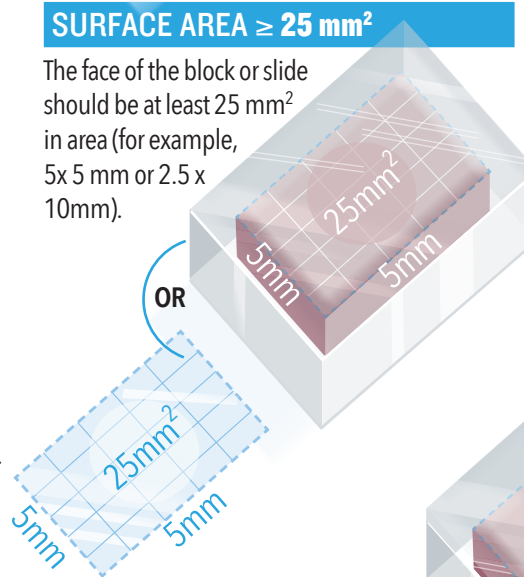
- A minimum of 12 unstained, charged, and unbaked 4-5 micron slides are required.
- 20 slides are highly recommended.
- Slides should include an additional H&E or Aperio stained slide (If unavailable, submit an extra unstained slide).

- **For core biopsy tissue**, use 3-5 cores embedded in a single block, aligned so that when cut, the blade is running parallel to the long axis of the cores.
- **Fine needle aspirates** with good cellularity are acceptable as long as cell blocks are established.
- **Biopsy tissue** can be from primary or metastatic sites. Bone biopsies are not allowed.



SURFACE AREA $\geq 25 \text{ mm}^2$

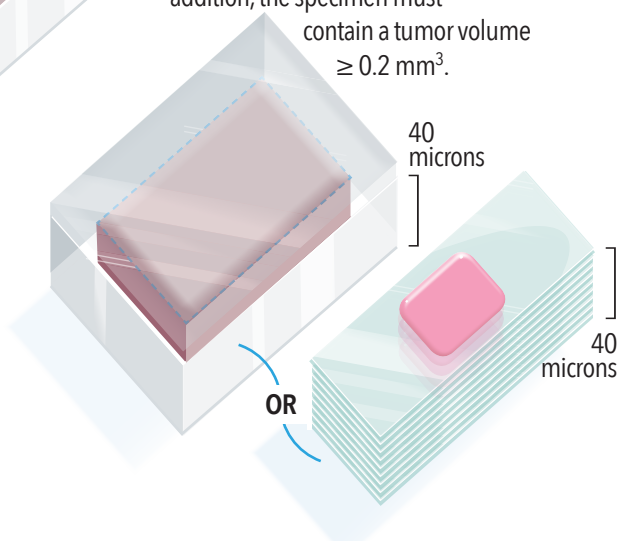
The face of the block or slide should be at least 25 mm^2 in area (for example, $5 \times 5 \text{ mm}$ or $2.5 \times 10 \text{ mm}$).



SPECIMEN VOLUME $\geq 1 \text{ mm}^3$

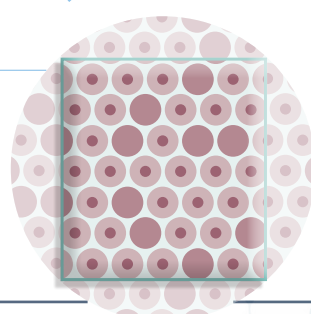
(including tumor volume $\geq 0.2 \text{ mm}^3$)

The total volume (surface area x depth) of the block or stacked slides should be at least 1 mm^3 . If the surface area is 25 mm^2 as recommended, the depth should be at least 40 microns. For this reason, a minimum of 12 slides is required. In addition, the specimen must contain a tumor volume $\geq 0.2 \text{ mm}^3$.



NUCLEATED CELLULARITY $\geq 80\%$

Specimens containing less than 80% nucleated cells require greater total volume and may not be suitable to assay. A total of 75,000 to 150,000 nucleated cells are recommended.



PRIOR TO ENROLLMENT, YOUR LOCAL PATHOLOGIST MUST SIGN OFF ON THE S1400 LOCAL PATHOLOGY REVIEW FORM CERTIFYING THAT TISSUE REQUIREMENTS HAVE BEEN MET.

Questions? Email: S1400question@crab.org



LUNG-MAP

FUNDING HIGHLIGHTS

- ❖ Sites will receive up to **\$5,869** (\$1,079 screening/ \$4,790 registration) for each patient on trial
 - Additional Site Payment for patients registered to **\$1400** of **\$500** for a limited duration.
- ❖ If biopsies are needed, sites will receive **\$3,000/\$6,000** for the biopsies performed at screening and/or progression after initial response on Arm1
- ❖ Sites will be reimbursed for additional research based procedures
- ❖ Sites will be reimbursed **\$1,333** for on-site visits outside the regular audit schedule

Funding Questions:
SWOG Group Chair's Office, funding@swog.org
For additional information, see funding memos



LUNG-MAP

WHO DO I ASK...? CONTACT LIST

Eligibility / Data Submission	Protocol / Regulatory	Public Relations / Media
Louise Highleyman and Krystle Pagarigan Data Coordinators SWOG Data Operations Center (206) 652-2267 S1400Question@crab.org	Crystal Miwa Protocol Coordinator SWOG Operations Office (210) 614-8808 ext 1019 cmiwa@swog.org	Wendy Lawton SWOG Communications Manager SWOG Group Chair's Office (503) 348-8675 lawtonw@ohsu.edu
Specimen		Imaging
Fred R. Hirsch, MD, PhD Study Co-Chair (303) 724-3858 fred.hirsch@ucdenver.edu	Philip C. Mack, PhD Study Co-Chair (916) 734-8022 pcmack@ucdavis.edu	Lawrence H. Schwartz, MD Study Co-Chair (212) 305-8994 lhs2120@cumc.columbia.edu
Specimen and Imaging Submission		
Foundation Medicine Inc. (617) 418-2200 S1400@foundationmedicine.com	TRIAD SWOG1400@irocohoio.org or call IROC Ohio at 614-293-2929	
USA Investigational Drug Distribution		
Pharmaceutical Management Branch (PMB) Matthew Boron (240) 276-6575 PMBAfterHours@mail.nih.gov		
Funding		
Federal funding: Pat Mize, MBA Accounting Specialist (503) 418-4533 mizep@ohsu.edu	Non-federal funding: Casey Dawson Financial Administration: SWOG-CTI (503) 494-5517 dawsoca@ohsu.edu	Distribution Email: funding@swog.org



LUNG-MAP

WHO DO I ASK...? CONTACT LIST

S1400 Treatment-related/Medical

Vassiliki Papadimitrakopoulou, MD
Study Chair
(713) 792-6363
S1400MedicalQuery@swog.org

Roy S. Herbst, MD
Study Co-Chair
(203) 785-6879
S1400MedicalQuery@swog.org

David R. Gandara, MD
Study Co-Chair
(916) 734-3771
S1400MedicalQuery@swog.org

Sub-Study Treatment-related/ Medical

Study Chair

Study Co-Chair

S1400A

S1400AMedicalQuery@swog.org

Vassiliki A. Papadimitrakopoulou, MD
NCTN Group: SWOG
(713) 792-6363

Hossein Borghaei, DO
NCTN Group: ECOG-ACRIN
(215) 214-4297

S1400B

S1400BMedicalQuery@swog.org

Corey J. Langer, MD
NCTN Group: NRG
(215) 615-5121

James L. Wade III, M.D.
NCTN Group: SWOG
(217) 876-6600

S1400C

S1400CMedicalQuery@swog.org

Martin J. Edelman, MD
NCTN Group: ALLIANCE
(215) 728-5682

Kathy S. Albain, MD
NCTN Group: SWOG
(708) 327-3102

S1400D

S1400DMedicalQuery@swog.org

Charu Aggarwal, MD, MPH
NCTN Group: ECOG-ACRIN
(215) 662-6318

Primo N. Lara, Jr., MD
NCTN Group: SWOG
(916) 734-5959

S1400E

S1400EMedicalQuery@swog.org

Mark A. Socinski, MD
NCTN Group: ALLIANCE
(412) 692-4724

S1400I

S1400IMedicalQuery@swog.org

Scott N. Gettinger, M.D.
NCTN Group, SWOG
(203) 785-7564

Lyudmila A. Bazhenova, M.D.
NCTN Group: Alliance
(858) 822-6189

S1400G

S1400GMedicalQuery@swog.org

Taofeek K. Owonikoko, M.D., Ph.D. MSCR
NCTN Group, ECOG-ACRIN
(404) 778-5575

Lauren A. Byers, M.D.
NCTN Group: SWOG
(713) 792-6363