

Plenary I

Thursday, May 11, 3:30 - 5:00 pm PT

This spring's translational medicine plenary will feature the following speakers and topics:



Welcome and Introduction

Lee M. Ellis, MD, FASCO

SWOG Vice-Chair for Translational Medicine
MD Anderson Cancer Center



The Hope Foundation Coltman Fellowship: Building a Career in Personalized Cancer Care through SWOG

Meghna S. Trivedi, MD, MS

Herbert Irving CCC, Columbia University



A Brief History of Time and Effort

Jerald Radich, MD

Fred Hutchinson Cancer Center



Come Together: Collaborating with Statisticians for Productive Translational Medicine Research in SWOG

Megan Othus, PhD

SWOG Statistics and Data Management Center
Fred Hutchinson Cancer Center

Plenary II

Global Oncology Research: Transcending Borders

Friday, May 12, 12:00 – 2:00 pm PT

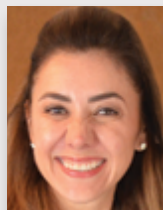
This spring's general plenary will feature the following speakers and topics. Presentations will be followed by a Q&A session.



Chair's Welcome and Update

Charles D. Blanke, MD, FASCO, FAWM

SWOG Group Chair
OHSU Knight Cancer Institute



SWOG Latin America Initiative (SLAI): Progress and Directions

Mariana Chavez MacGregor, MD, MSc

SWOG Executive Officer for International Affairs
MD Anderson Cancer Center



Partnership and Education as Components of Global Oncology Research

Julie R. Galow, MD

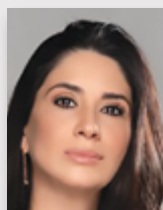
Executive Vice President and Chief Medical Officer,
American Society of Clinical Oncology (ASCO)



Translating Global Health Lessons Learned in Africa to Latin America

Ophira Ginsburg, MSc, MD

Senior Advisor for Clinical Research, Center for Global Health, National Cancer Institute



Enhancing Diversity through International Research

Angelica Nogueira-Rodrigues, MD, PhD

Professor, Universidade Federal de Minas Gerais, Brazil

Both Plenary I and Plenary II will also be live-streamed via Zoom, and questions for speakers will be fielded both in person and via Zoom's text chat feature.